

One-pipe Steam Heaters

Key features:

- One pipe connecting the heater to the system
- Air vent on the opposite side



Two-pipe Steam Heaters

Key features:

- Two pipes connecting the heater to the system: one larger than the other
- Valve on the larger pipe, usually connected near the top of the heater
- Steam trap on the smaller pipe, connected near the bottom of the heater



Two-pipe Hydronic / Hot Water Heaters

Key features:

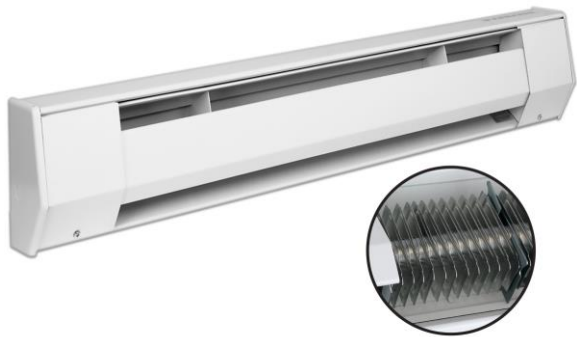
- Two pipes connecting the heater to the system, both the same size
- May or may not have a valve
- Usually extends the whole width of the wall



Electric Heaters

Key features:

- No piping
- Maybe a baseboard style or packaged terminal air conditioner (PTAC) that provides heating and cooling
- May have an on/off switch or control directly on the heater
- No central boiler or furnace required with these



Forced Air Furnace

Key features:

- Ducted from furnace to vents/registers
- Typically one furnace per dwelling unit
- Furnace could utilize natural gas, propane, or electric resistance for heat source

